

Answer ID:	9729	Last Updated:	6/29/05
Product:	Peachtree Premium Accounting, Peachtree Premium Accounting Accountants' Edition, Peachtree Premium Accounting for Manufacturing, Peachtree Premium Accounting for Distribution, Peachtree Premium Accounting for Construction, and Peachtree Premium Accounting for NonProfit	Version:	2006
Summary:	How do I install Peachtree Premium Accounting on my Windows 2000 or Windows 2003 Terminal Server?		

Question:

How do I install Peachtree Premium Accounting on my Windows 2000 or Windows 2003 Terminal Server?

Answer:

The guide below will step you through installing Peachtree Premium Accounting on your existing Windows 2000 or Windows 2003 Terminal Server.

Before Installation

Note: The following installation guide assumes the following:

- The Windows 2000 or 2003 server has been configured as a **Terminal Server**.
- Users have been created on the server, and the users who will be using Terminal Server have been added to the **Remote Desktop Users** group.
- Each user is using Windows on their local client machine, and are using Microsoft's Remote Desktop Protocol (RDP) client.

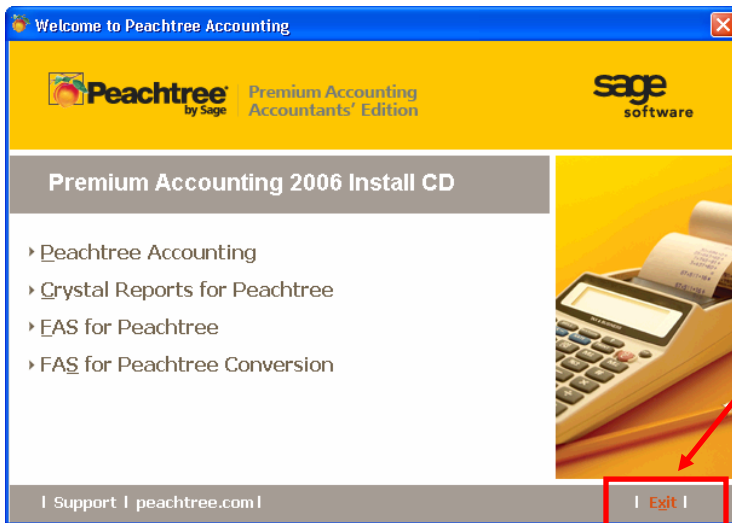
Note: Windows XP has the client pre-installed (To launch it, click **Start**, click **All Programs**, click **Accessories**, click **Communications**, and then click **Remote Desktop Connection**). All other versions of Windows will need to download the latest version from Microsoft's website.

In addition, the following steps should be taken to ensure no sessions are active during the install.

- *Ensure that there are no active sessions.* Click **Start**, **Control Panel**, **Administrative Tools**, and select **Terminal Services Manager**. If any sessions are active, they will need to be disconnected before installing Peachtree. Otherwise, Peachtree will not be available to the session users until exit and log back in to the Terminal Server.
- *Temporarily disable Terminal Services connection.* Right-click on the server desktop's **My Computer** icon, click **Properties**, click the **Remote** tab, and then uncheck the **Allow users to connect remotely to this computer** check box.
- *Specify Full Security as the security mode using the Terminal Services Configuration utility.* To open **Terminal Services Configuration**, click **Start**, click **Control Panel**, double-click **Administrative Tools**, and then double-click **Terminal Services Configuration**. In the console tree, click **Server Settings**, right-click **Permission Compatibility**, and then click **Properties**. In the **Permission Compatibility** dialog box, click **Full Security**, and then click **OK**.

Installing Peachtree on the Terminal Server

1. Ensure you are logged on as a member of the **Administrators** group on the terminal server.
2. Close any running programs.
3. Insert the Peachtree CD. When the Autorun launch screen appears, click **Exit** to close the screen. **Do NOT install Peachtree on a Terminal Services machine using the Autorun screen.** Doing so will cause the server to bypass installing Peachtree under an Application Role and the remote users will not be able access Peachtree.

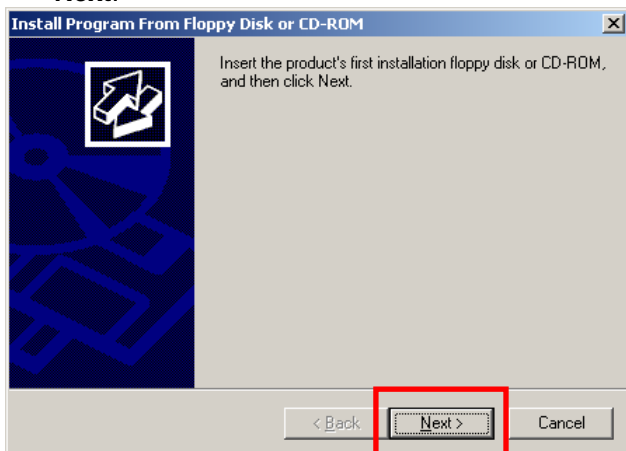


Very important!
Do not install Peachtree from the Autorun screen. Instead, use **Add/Remove Programs**.

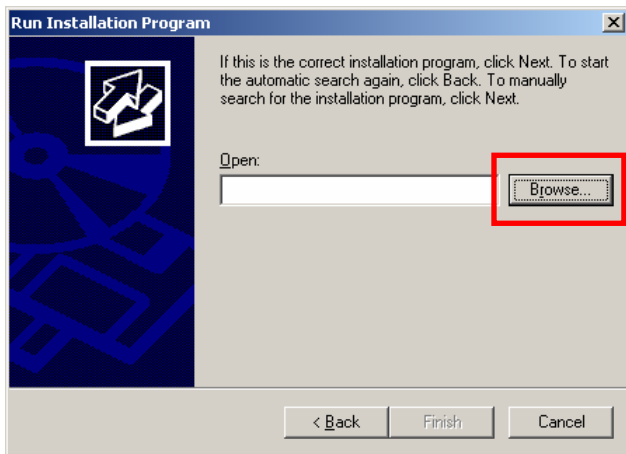
- In order for Terminal Services to install Peachtree so that all session users have access to it, Peachtree must be installed through **Add/Remove Programs** in the **Control Panel**. You can access the **Add/Remove Programs** window by clicking Start, click Control Panel and double-click the **Add/Remove Programs** icon. Once in the **Add/Remove Programs** window, click Add New Programs button on the left and then choose to install from a CD or a Floppy.



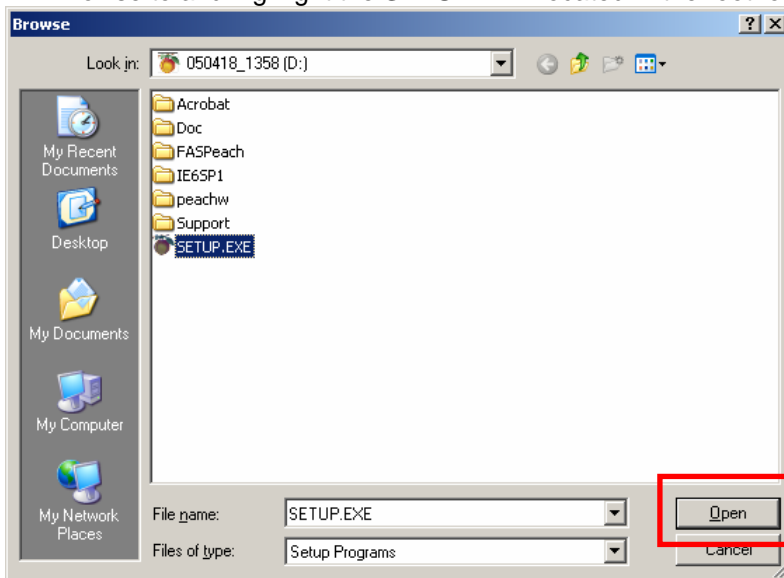
- A **Run Installation Program** wizard will appear. You will then be asked to insert the Peachtree CD. Click **Next**.



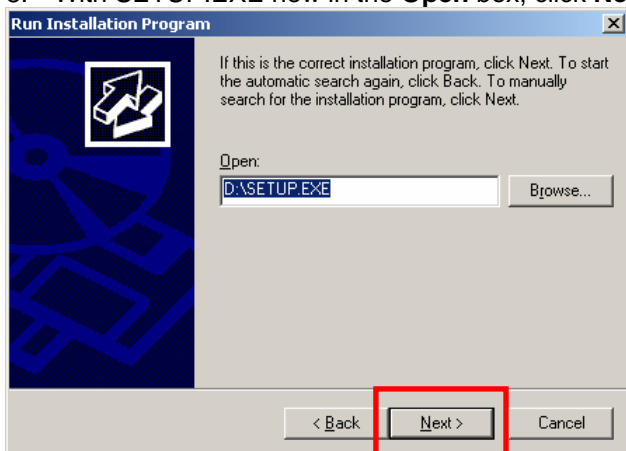
- In the next window, click **Browse**.



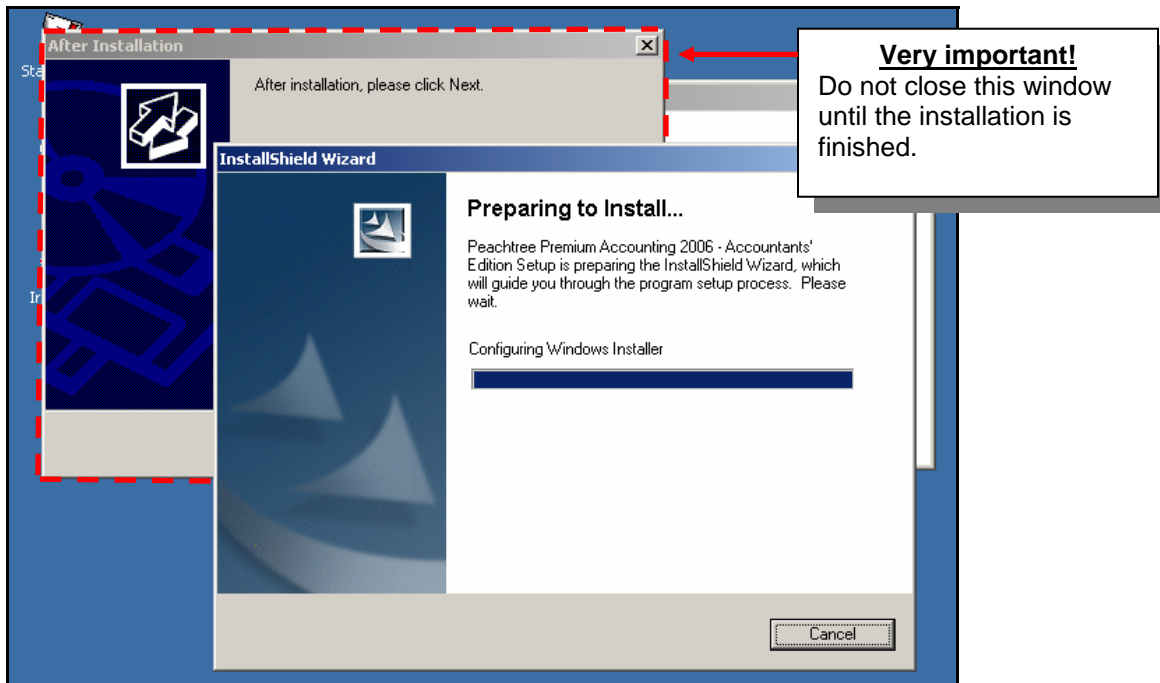
7. Browse to and highlight the **SETUP.EXE** located in the root folder of the CD. Click **Open**.



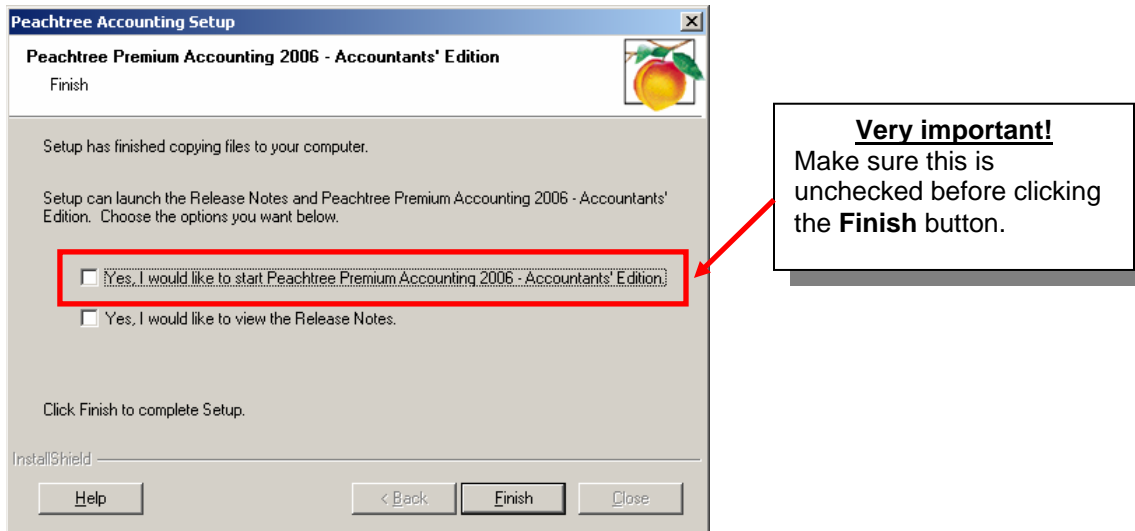
8. With **SETUP.EXE** now in the **Open** box, click **Next**.



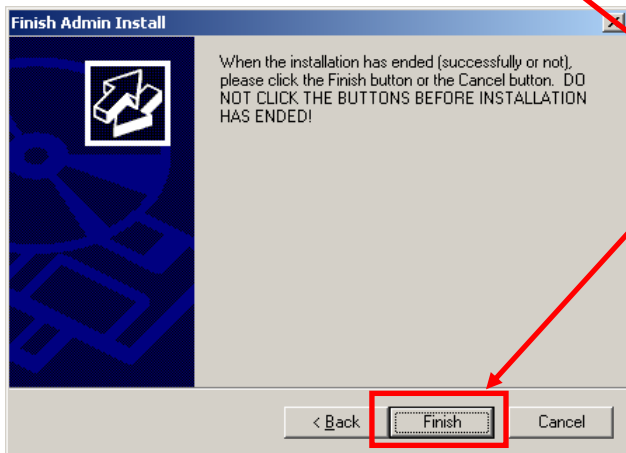
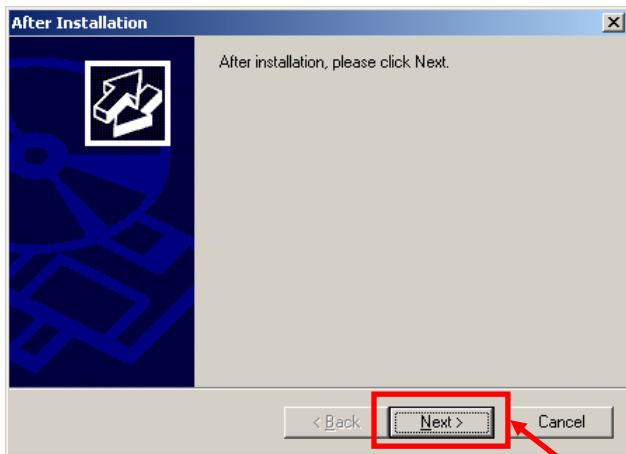
9. Peachtree's **Installation Wizard** will now start. Except for the last step of the wizard, it is identical to a regular installation of Peachtree. However, it is important to note that an **After Installation** wizard will appear in the background. While this window is open, Terminal Services will monitor the Peachtree installation and apply its settings to all Terminal Services users. **Do NOT close this window until the installation is complete.**



10. Once Peachtree has installed and is at the *Finish* window of the installation wizard, uncheck “Yes, I would like to start Peachtree.” before clicking the **Finish** button. **This is very important!** Leaving the box checked will cause Peachtree to execute before finishing the Terminal Server install of Peachtree.



11. Now that you have finished the Peachtree installation wizard, you will need to finish the Terminal Services **After Installation** wizard. Do not close or cancel either screen. Make sure you click **Finish**. Otherwise, Peachtree will fail to appear as a program during any Terminal Services sessions.



Very important!
Once the Peachtree installation has finished, make sure you click through the entire **After Installation** wizard and clicks the **Finish** button.

Congratulations, you have completed installing Peachtree Premium Accounting for Windows on you Windows 2000 or Windows 2003 Terminal Server. Your users can now log in and begin using Peachtree.

NOTE: Any users logged in during the installation will need to log out of their sessions and log back in, in order for Peachtree to appear as a program.